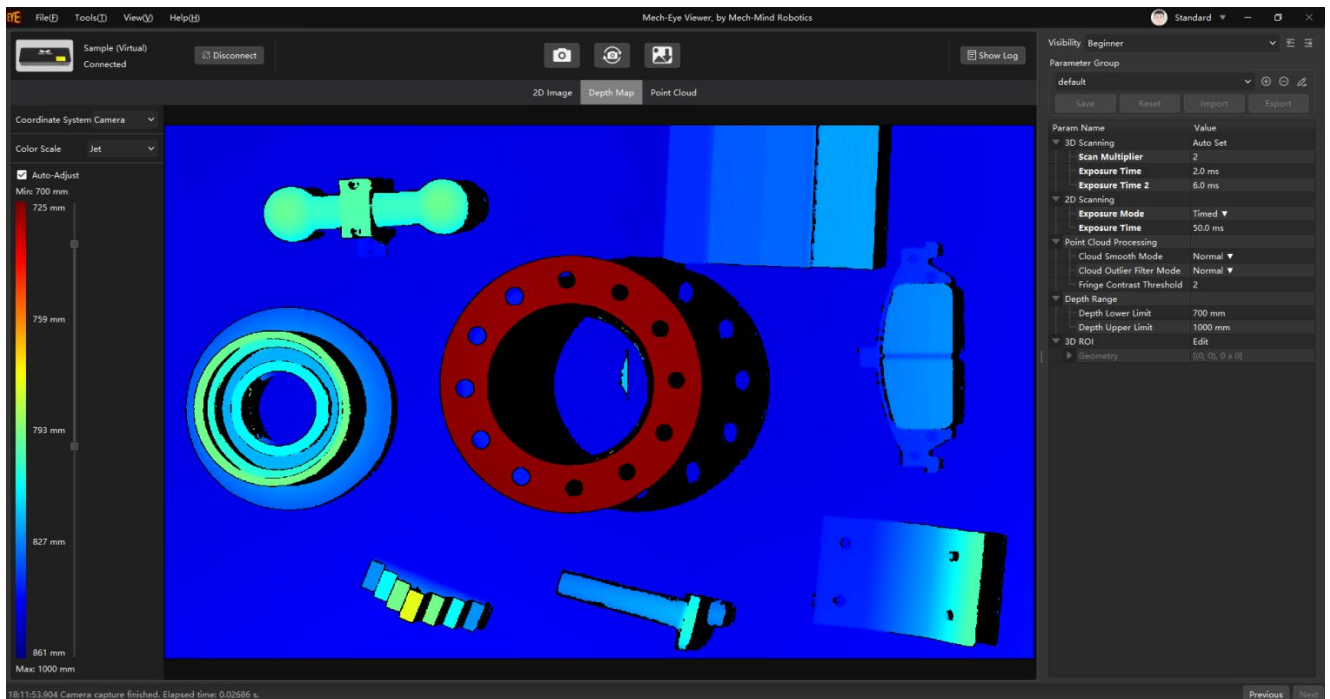
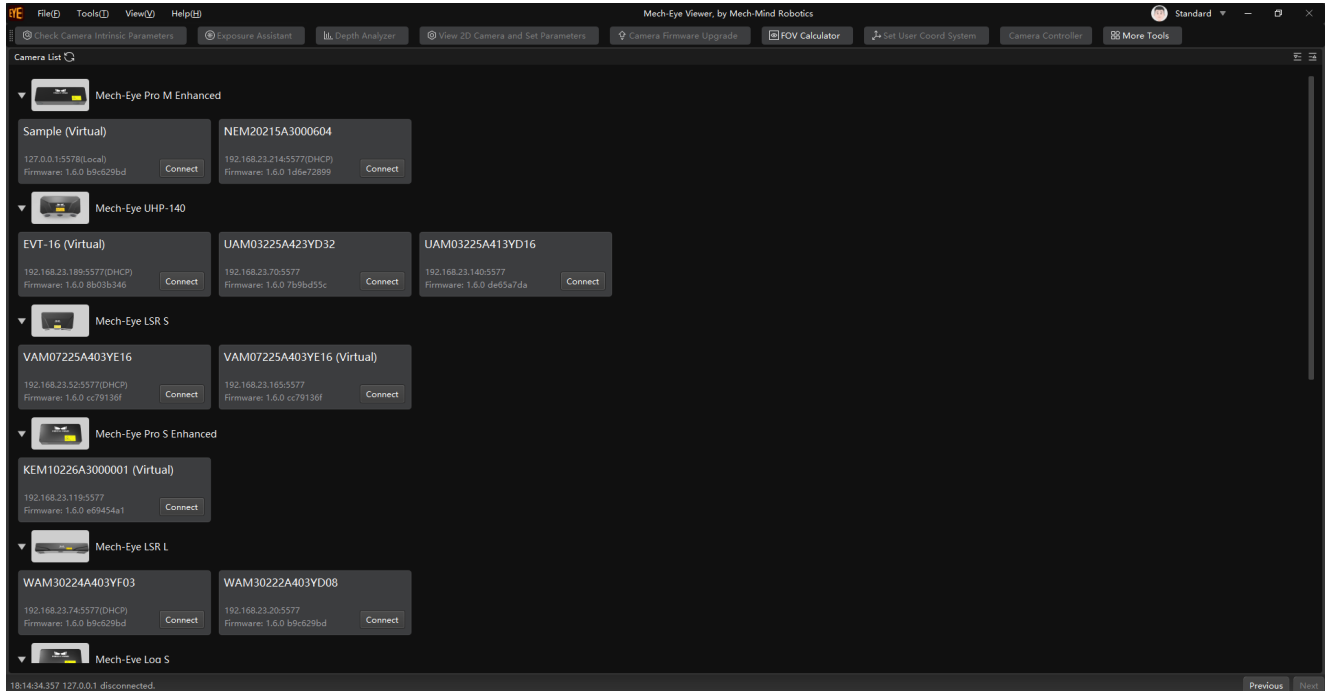


Release Notes SDK 1.6.0

1. New Features

Feature 1

- Brand new user interface.

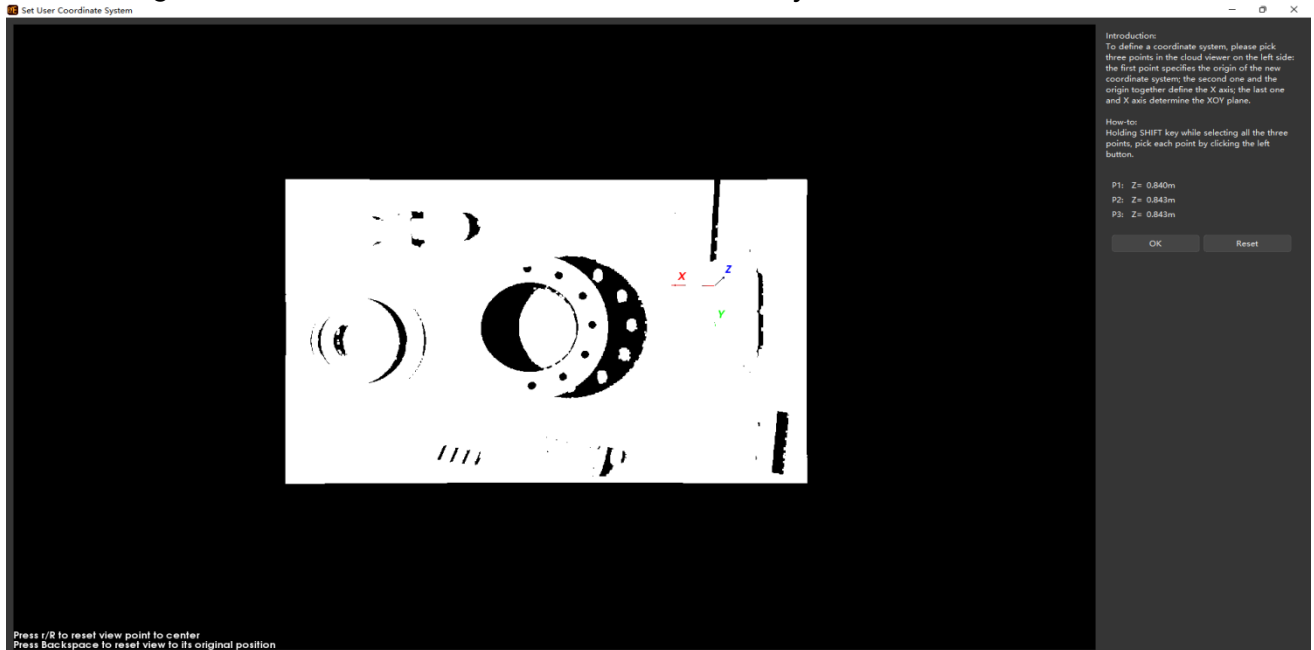


Feature 2

- Compatibility for V4 cameras.

Feature 3

- Defining custom reference frame in Set User Coordinate System.



Feature 4

- API Related:
 - Compatibility for cameras of UHP series.
 - Added interface for connecting to a camera by IP address.

2. Improvements

- Improved the point cloud processing result in Accurate mode for laser cameras
- GenlCam (ebus) Related:
 - Optimized speed of data transfer and image capturing.
 - Provide non-standard method for obtaining 2D and 3D image data simultaneously.
 - Provide interface for listing the camera intrinsic parameters.

3. Now Fixed

- GenlCam (ebus) Related:
 - Repaired the issue of incorrect mapping of color channels.